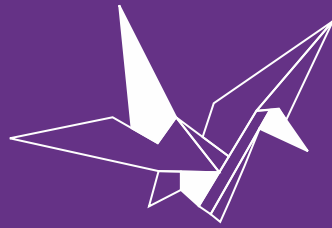




JUHU SHEETAL | AMAL GROUP





“The world as we have created it is a process of our thinking. It cannot be changed without changing our thinking.”
Albert Einstein



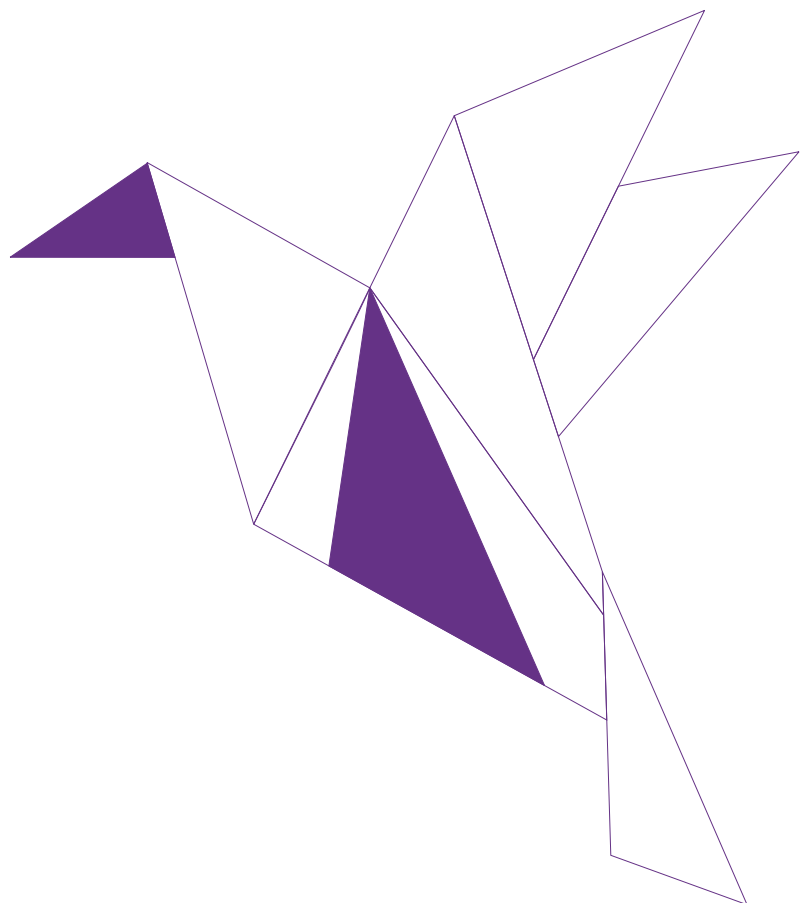


A new tomorrow...starting today

Nestled amidst the leafy lanes of Juhu Scheme, an iconic rebirth is witnessed. A new life, a new future, new hopes and new aspirations. Juhu Sheetal is Amal Group's latest redevelopment initiative in Juhu Scheme, providing a new sanctuary to the residents who previously resided here and to a handful of new families who will make this iconic address their new home.

The project boasts compact well designed 2 and 3 BHK homes with a large common terrace garden that offers opportunities for residents to play, party or enjoy a quiet evening.

Equipped with all the modern amenities of a new age residential building, Juhu Sheetal assures a fresh contemporary lifestyle and a promise for a new tomorrow.





Catalysts to Change:

Juhu Sheetal is Amal Group's latest redevelopment project in the city. The group has been consistently delivering on their promise to stakeholders throughout the city. A promise of timely delivery, well designed homes and a transparent process have earned them many admirers and happy clients.





One landmark after another...

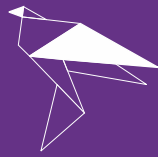
Amal Group has delivered a renewed lifestyle to numerous families in Mumbai. Client satisfaction and on time delivery have been one of the hallmarks of their track record.



Aspen Garden - Goregaon East



Madhu Vasant - Vile Parle East



Jayshika - Juhu



Pushpa Vatsalayam - Juhu



Lily White - Jogeshwari East



Flora – Khar West



Magnolia – Santacruz East



Nileema - Khar West



Ambrosia - Borivali East



Maple Terraces - Palghar East



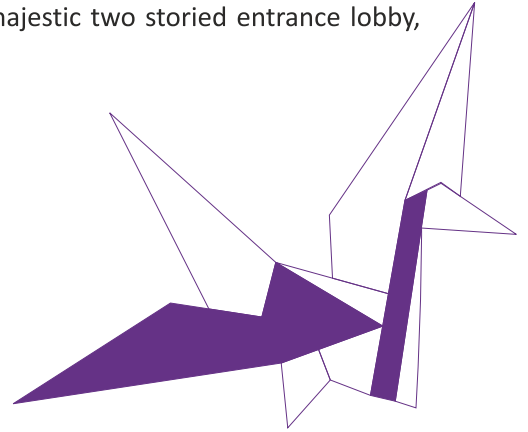


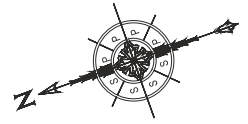
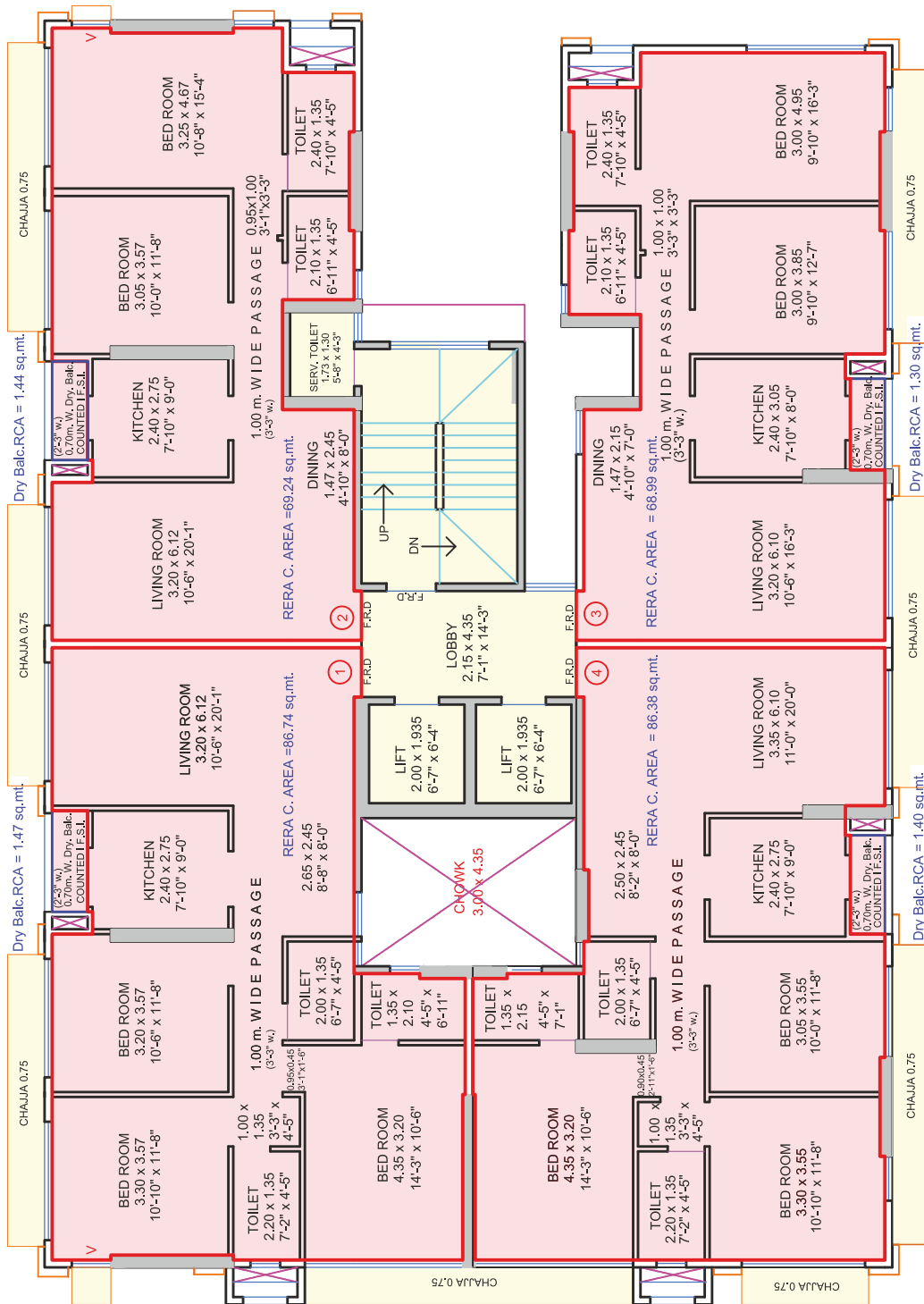
A new lifestyle...starts at the very top...

The new lifestyle doesn't just begin at home, but is experienced in every space that has been thoughtfully designed and allocated.

Imagine walking in the park amidst the open sky and passing clouds-Juhu Sheetal's unique terrace provides the best experience with it's Jogging track & Party area while the children play happily in the kids play area.

Feel the satisfaction of having arrived, when you reach the majestic two storied entrance lobby, a culmination of your journey.





TYPICAL FLOOR PLAN

Amenities provided in Apartments and Common Area.

General Surroundings:

- Pavers or equivalent material in the entire ground and stilt area
- Gymnasium and Landscaped Garden at terrace level
- Intercom & security system (CCTV in entire compound and reception area)
- Puzzle Parking
- Generator for essential lighting, elevators and water pumps.
- Fire fighting system
- Rain water harvesting chambers to collect rain and surface water
- Elegant front entrance with watchman cabin

Internal Amenities :

- 600 X 600 / 800 X 800 Vitrified tiles flooring in Living room, Bedrooms, Passages, Kitchen
- Exhaust fan in kitchen and toilet
- Superior quality bathroom fittings and sanitary ware.
- Video door phone in each Apartment.
- High quality aluminium windows.

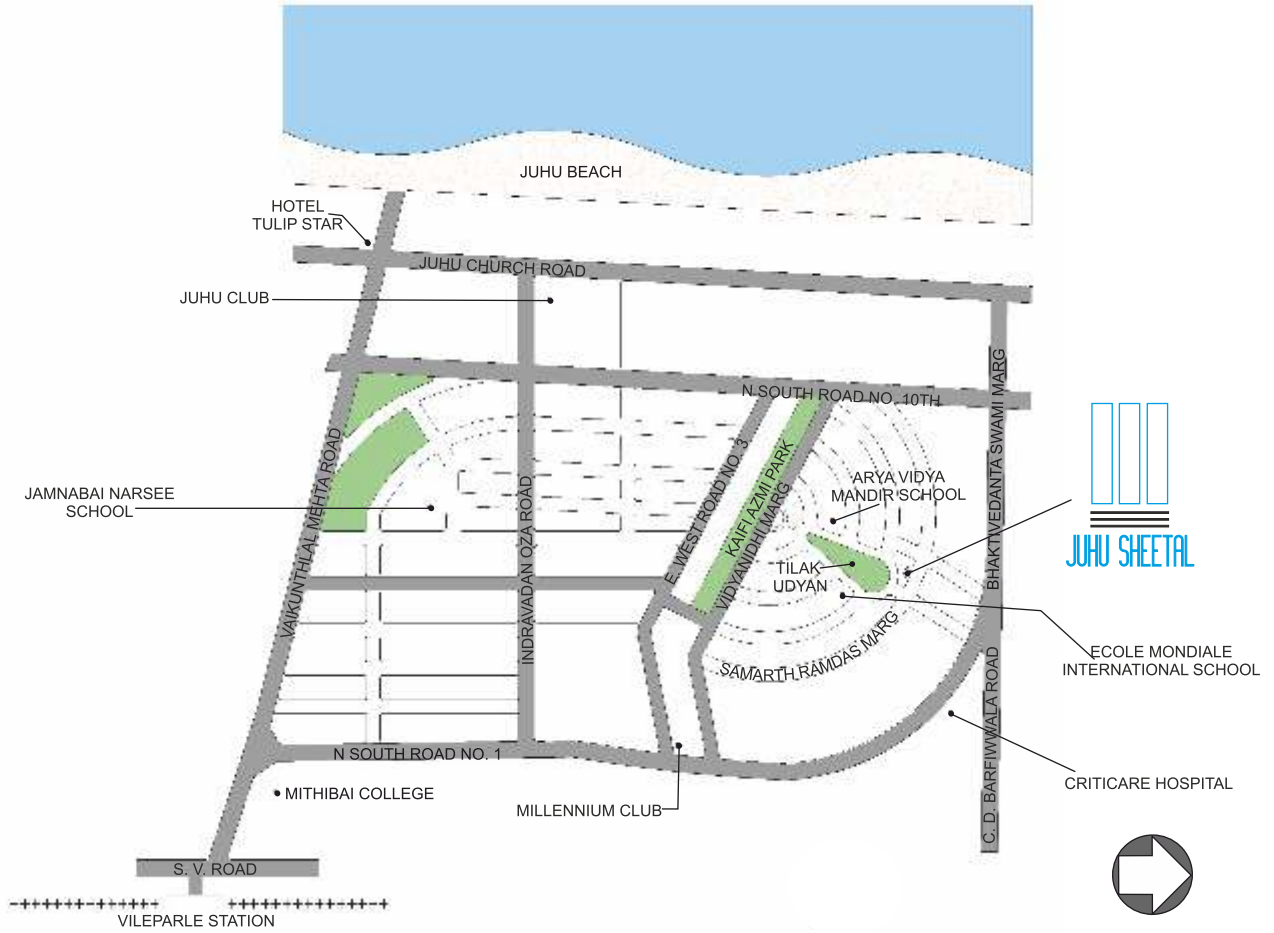
TYPE	3 BHK	
FLAT No	1	
RERA Area	88.21 Sq.m.	949.49 Sq.Ft.

TYPE	2 BHK	
FLAT No	2	
RERA Area	70.68 Sq.m.	760.80 Sq.Ft.

TYPE	2 BHK	
FLAT No	3	
RERA Area	70.29 Sq.m.	756.60 Sq.Ft.

TYPE	3 BHK	
FLAT No	4	
RERA Area	87.78 Sq.m.	944.86 Sq.Ft.

LOCATION MAP



TERRACE PLAN





The present changes the past..new initiatives set pace for
newer avenues for growth

Rera Regn No. P51800000648
available at website: <http://maharera.mahaonline.gov.in>

Team behind Juhu Sheetal

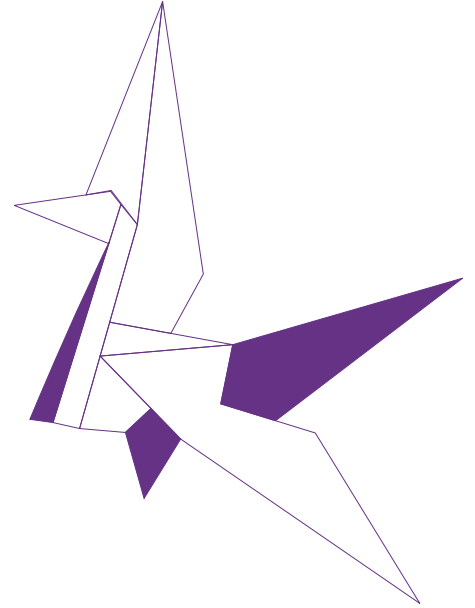
Consulting Architect: Connect Four Design Studio LLP
Architect: Abhijit A. Mehta
Structural Consultant: J + W Consultants LLP
Legal Consultant: Saumil R. Vasavada.

Registered Office:

Amal Realtors Pvt. Ltd.
A – 501, Gladdiola, Old Hanuman Road, Vile Parle (E), Mumbai – 400 057
Tel: + 91 22 26125506/7/8
Email: sales@amalgr.com

Site Office:

Juhu Sheetal, Building no 12, Samarath Ramdas Marg, JVPD Scheme,
Juhu, Mumbai – 400 049.



A HOME FOR EVERY DREAM



Developed By
Amal Realtors Pvt. Ltd.

